

M2435 - Detroit

STATUS

Available

REF. NUMBER

M2435

MANUFACTURE

Detroit

TYPE

Model 6055-C

ENGINE NO.

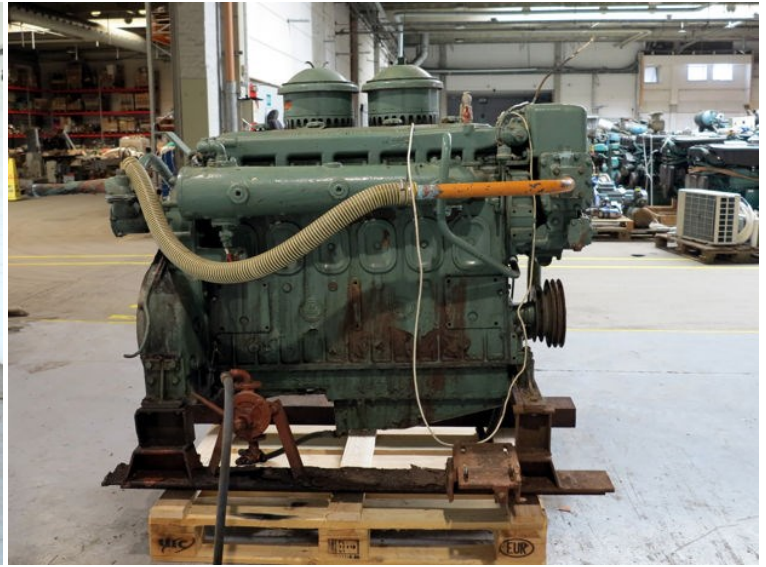
6A-133441

RPM

1940

REMARKS

(6 cyl)





| OPTIONS | | EQUIPMENT | | TYPE | |
|--|--|---------------|----|------------------|-----|
| DETROIT DIESEL ENGINE DIVISION DETROIT, MICHIGAN U.S.A. | | ALUMINUM HDG. | 2E | WATER PUMP | 4L |
| MODEL 3055-C | | OTH. DIST. | 2D | DEFLECTOR | 5C9 |
| UNIT NO. SA-122441 | | VENT. SYSTEM | 2B | CRIGHT. CYL. | 8 |
| MAX. RPM NO LOAD 1940 | | FAN SHROUD | 5A | VAL. CONT. | 11 |
| RATED HP AT | | FUEL PUMP | 8 | FUEL FILTER | 7Y |
| CONT. HP AT | | WATER | 8 | THROTTLE CONT. | 141 |
| | | ROCKER CYLS | 2 | RAIN. OREG. GIP. | 182 |
| | | INSTR. | 12 | 201. DRIVE | 1 |